



Kitchen & Bath Pre-Design Appointment Guide

We at Granite Plus offer our sincere thanks for considering us for your cabinet and countertop project and we are confident you will be pleased with our design services and prices.

At Granite Plus we do offer measure and installation services for cabinets. To get the design process started and develop preliminary pricing we will use your measurements. A measuring guide and tips are on the following pages. We will discuss and verify measurements before ordering cabinets.

The Basics

Estimated start date: _____ Estimated Completion date: _____

(These dates can be approximate)

Remodel or New Construction? _____

Do you have an installer? _____

Do you want to remove walls or change layout? _____

Do you have soffits and are they being removed? _____

Any detail you want your designer to know about your project? Things you dislike? What can you not live without in your kitchen and bath?



Measuring Guide



Grab a loose piece of paper or use the back of this page to draw up your space from a “bird’s eye” perspective. No graph paper is needed, it does not have to be to scale or fancy.

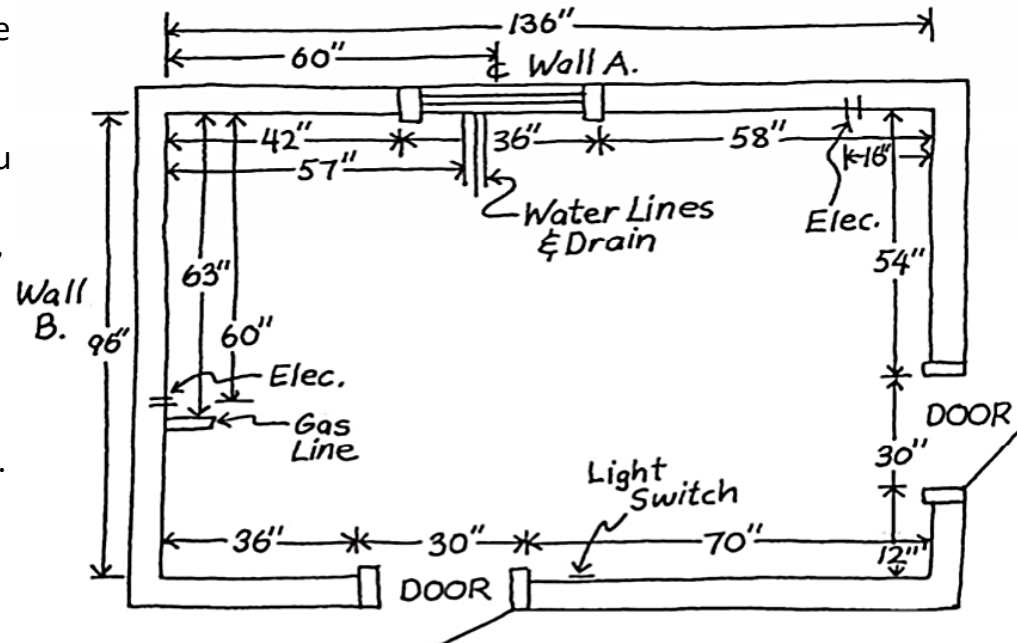
Draw your kitchen as a box showing all the walls that you think will have cabinets. Be sure to include any major structural features or obstacles such as: doors, windows, hood vents, exhaust, gas lines, water lines, drain lines, outlets, switches, and light fixtures.

Write all your dimension lengths in **inches only**. Round measurements to the nearest 1/8 inch if possible.

Remember this is just to get started, your designer will confirm details later.

Feel free to draw your ideas of what you would like and include the placement of sink and appliances.

Your drawing should resemble this diagram.



Measuring Guide



*Measure all doors, windows & opening from outside edge to outside edge.

*Note ceiling height and appliance measurements on side of plan.

1. Measure from the corner to the outside of the trim or opening of the nearest door, window or opening.
2. Next, measure that door, window or opening from the outside to outside making sure it's the widest outside of the trim.
3. Measure from the outside of the trim to the next doorway, window or opening and repeat step 2. If there is not another obstacle on this wall measure up to the next corner of the room.

Snap a few photos of your entire space. That way if you missed a measurement or forgot about an outlet or cold air return we can reference it with the photo.

The photos can help your designer and are also rewarding to you after your project is complete!

Features

Circle all that you would like to include in your new space!



Glass Doors



Pull-Out Shelves



Lazy Susan in Corner Base



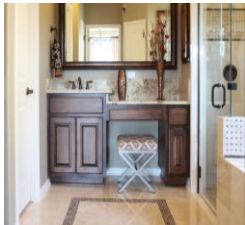
Lazy Susan in Corner Wall



Sink Tilt-Out Tray



Spice Rack Pullout



Knee Drawer



Open Shelves



Large Drawers



Decorative Ends



Valances



Microwave Base or Wall



Appliance Garage



Double Trash Pullout



Single Trash Pullout



Wine Rack Options

Tips For Success

- ⇒ “Measure Twice, Cut-Once”an old saying, but it does relate. Make sure you measure every aspect of the project prior to placing an order or please arrange for GP Design/or your hired contractor to measure for you to confirm. This is special order cabinetry and it is not ever returnable including, additional trim from the job.
- ⇒ Confirm all appliance dimensions prior to placing cabinet order.
- ⇒ Plan ahead. You will most likely be without a functioning kitchen for 1-2 months, and this is largely dependent on your planning, scheduling, and your choice of countertop.
- ⇒ Do not tear down your existing kitchen without first inspecting the new cabinetry. Contractually, installation constitutes acceptance of the product. Be prepared to wait 2.5-4 weeks for replacement parts if you happen to receive anything broken/damaged/mis ordered.
- ⇒ Your cabinetry **cannot** be measured for your new countertops until all the base cabinets are completely installed, set, and level. Plan for about 2 weeks to get on the measure/templator’s schedule after contract/deposit. Then, it’s an estimated 4-5 weeks for fabrication and installation of new tops. This will fluctuate based on the volume of jobs/time of year. Keep in mind we try to make this inconvenience go as fast as possible, but we cannot rush or speed this along. Schedules are made as they come in order. Some clients will set up a temporary sink-so you have running water while this process takes place.
- ⇒ As soon as you have a delivery date on your cabinets you should have countertop contract signed and deposit made.
- ⇒ Be prepared to remove excessive trash and debris from the installation (customer’s responsibility to get dumpster/disposal).
- ⇒ If you are changing flooring, keep in mind that will affect the overall height of your cabinets.
- ⇒ Have your cabinetry professionally installed by GP Design, or a trusted qualified cabinetry installation carpenter/contractor.